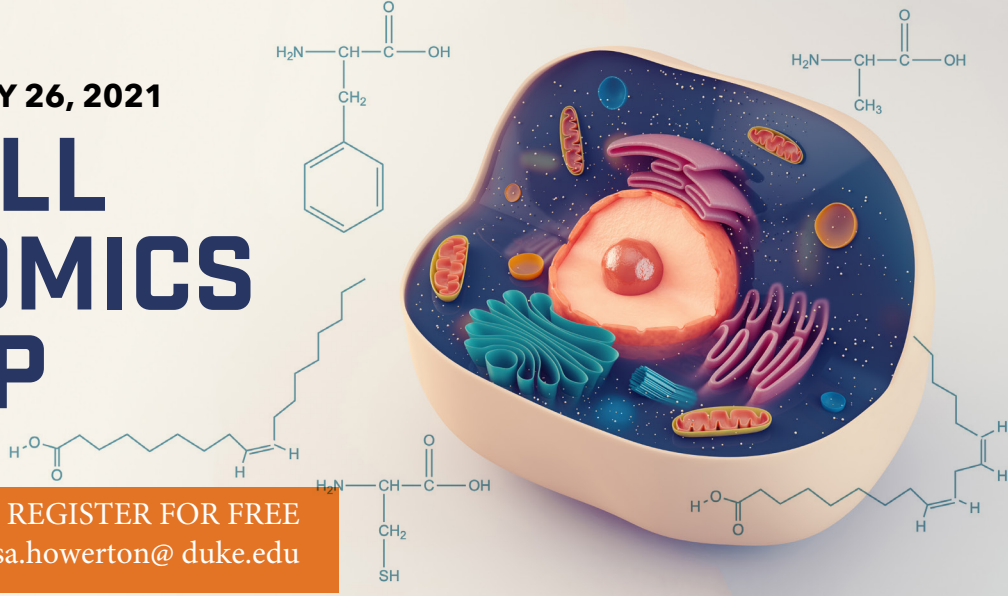


ONLINE WORKSHOP | FEBRUARY 26, 2021

SINGLE CELL METABOLOMICS WORKSHOP

ALL PARTICIPANTS ARE WELCOME TO REGISTER FOR FREE
To register, please email Lisa Howerton at lisa.howerton@duke.edu



PROGRAM

10:00 Welcome and Introduction Rima Kaddurah-Daouk, *Duke University*

Session I Chair: Mioara Larion, *National Cancer Institute*

10:05 “Single cell metabolomics for biomedical and drug research”

Thomas Hankemeier & Ahmad Ali, *University of Leiden*

10:35 “High throughput metabolomics of individual cells in the brain”

Jonathan Sweedler, *University Illinois Urbana-Champaign*

11:05 “Optical methodologies to characterize the metabolic underpinnings of breast cancer” Nimmi Ramanujam, *Duke University*

11:35 Break

Session II Chair: Jennifer Kirwan, *Berlin Institute of Health*

11:45 “Towards super-resolution metabolic imaging using mass spectrometry imaging”

Ian Gilmore, National Physical Laboratory, London

12:15 “Integrative approaches to study cancer and immune cell metabolism”

Shawn Davidson, Princeton University

General Discussion Chair: Jonathan Sweedler, *University Illinois Urbana-Champaign*

12:45 Discussants: S. Davidson, I. Gilmore, T Hankemeier, I. Lanekoff, L-I. McCall, N. Ramanujam, J. Sweedler

ORGANIZED BY:

- Rima Kaddurah-Daouk, *Duke University*
- Jennifer Kirwan, *Berlin Institute of Health*
- Andrew N. Lane, *University of Kentucky*
- Mioara Larion, *National Cancer Institute*

MANA
Metabolomics
Association of
North America

